

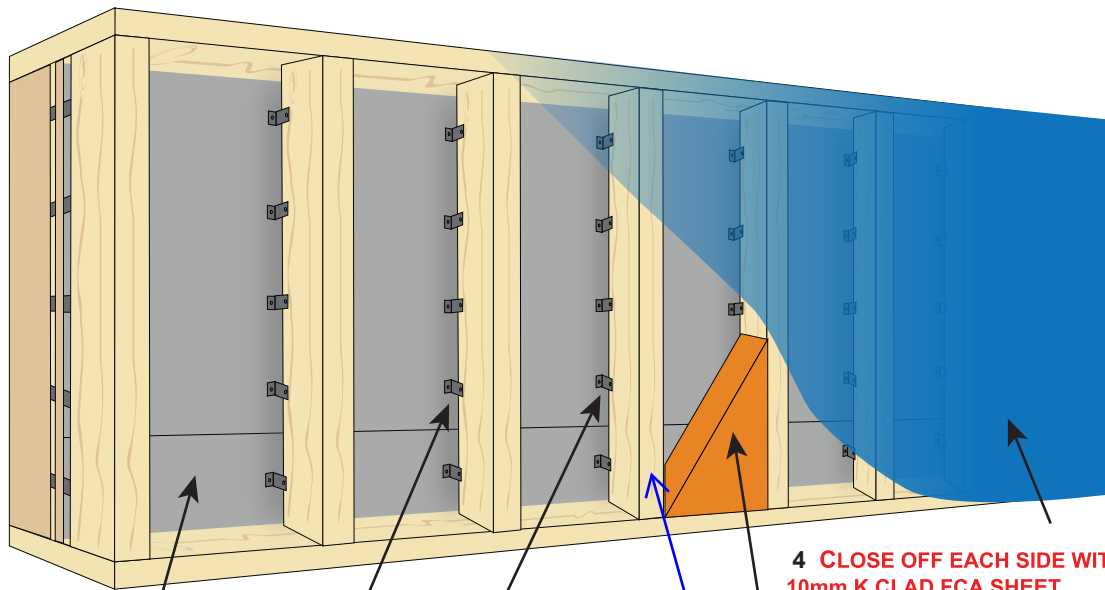
# FIRECRUNCH SHAFT LINER (TIMBER FRAME) (AS1530.4)

**FIREWALL SL19 /TG4 TG19 2700X600**

**NATA LABS TESTED AND ASSESSED AS1530.4 FRL 60/60/60**

**NON LOAD BEARING HI RISE INTERTENANCY FIRE WALL Acoustics Rw 62 net ctr 52.**

**FAST VERTICAL AND HORIZONTAL SET SHAFT LINER REQUIRES NO U TRACK, BASE TRACK, SIDE TRACK OR H STUDS. USES LIGHTER 19mm TG AND JUST 1 X 10mm K CLAD EACH SIDE FOR FRL /60/60 . NO TOP DROP IN 25mm PLASTER BOARD SHEETS required which are subject to water damage until roof is on ,AS IN SEMI DETACHED OR PARTY WALL TOWN HOUSES. FCA MgSO4 is also impervious to water or flooding 259mm WIDE DBL STUD DISCONTINUOUS**



**1 LAY FIRST 19MM PANEL HORIZONTAL T SIDE UP ,FILL GROOVE SIDE WITH RECC FIRE SEALANT .THEN INSERT A VERTICAL 19mm 2700 X 600 PANEL GROOVE SIDE DOWN. FILL GROOVE SIDE WITH FIRE SEALANT AS 1530.4 PUSH T G SHEETS TOGETHER AND AFFIX ALUMINIUM BRACKETS**

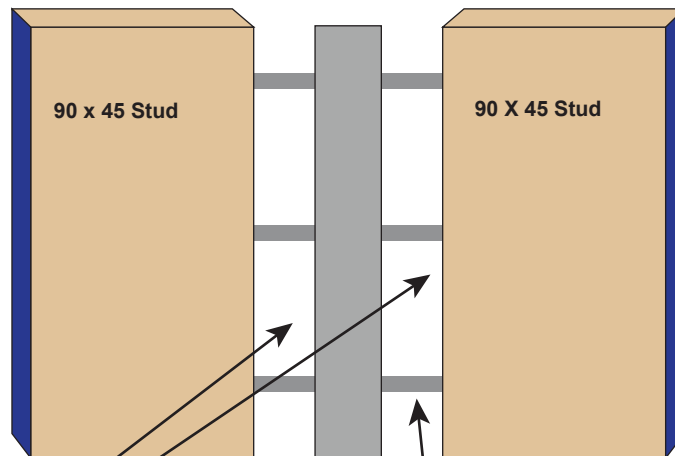
**2 FIX 75 X 45 ALUMINIUM BRACKETS TO STUD AND BOARD,BOTH SIDES ,ALLOW MIN 20mm SPACE FROM STUD TO BOARD IN EACH PANEL AND SCREW FIX**

**3 90 x45 TIMBER STUDS PLUS INSERT 2 5/ 90mm. GLASS WOOL BATT BETWEEN STUDS BOTH SIDES OF THE FRAME**

**4 CLOSE OFF EACH SIDE WITH ONE 10mm K CLAD FCA SHEET VERTICAL SET WITH STUD BACKED 6mm WIDE VERTICAL FIRE JOINT, FILL 6MM GAP WITH RECC FIRE SEALANT**

## END ELEVATION

10 mm K-CLAD →



**FIRECRUNCH AUSTRALASIA PTY LTD  
ABN 37 062 875 041  
support@firecrunch.com.au  
1300 933 102  
NSW-ACT-QLD-VIC-TAS-SA**

20mm air gap each side

19mm FCA Shaft Line

75mm x 45mm FIX LONG SIDE TO STUDS SHORT SIDE TO SL BOARD SET WITH 20 mm BRACKET OVERHANG FOR AIR GAP AND SCREW FIX