



CONSTRUCTION SPECIFICATIONS DRAWINGS

INSTALLATION MANUAL :
SHED - FIRECRUNCH **K-CLAD 10mm**

FRL 60/60/60 and 90/90/90

FRL 60/60/60 and 90/90/90

NATA Labs Australia Fire Tested Systems **AS1530.4** and more

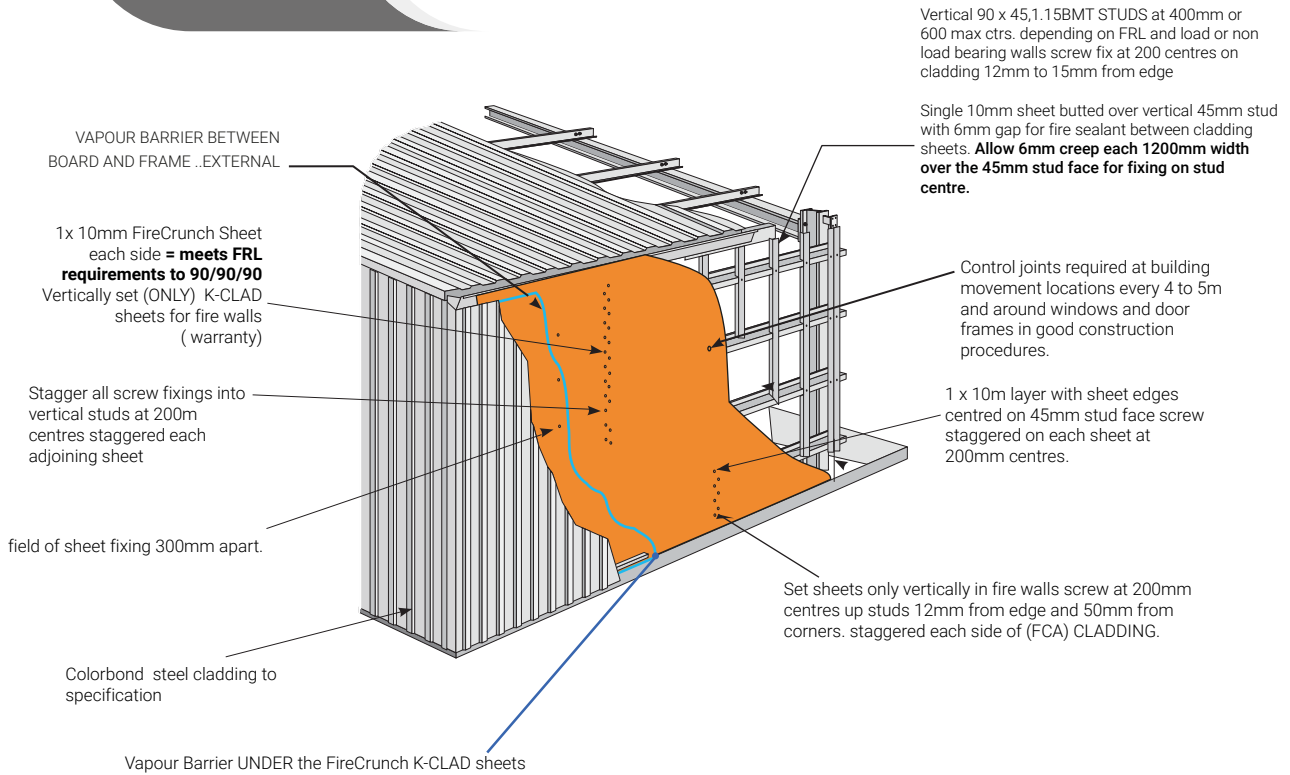
NOTE: FCA ref, is FireCrunch Australia



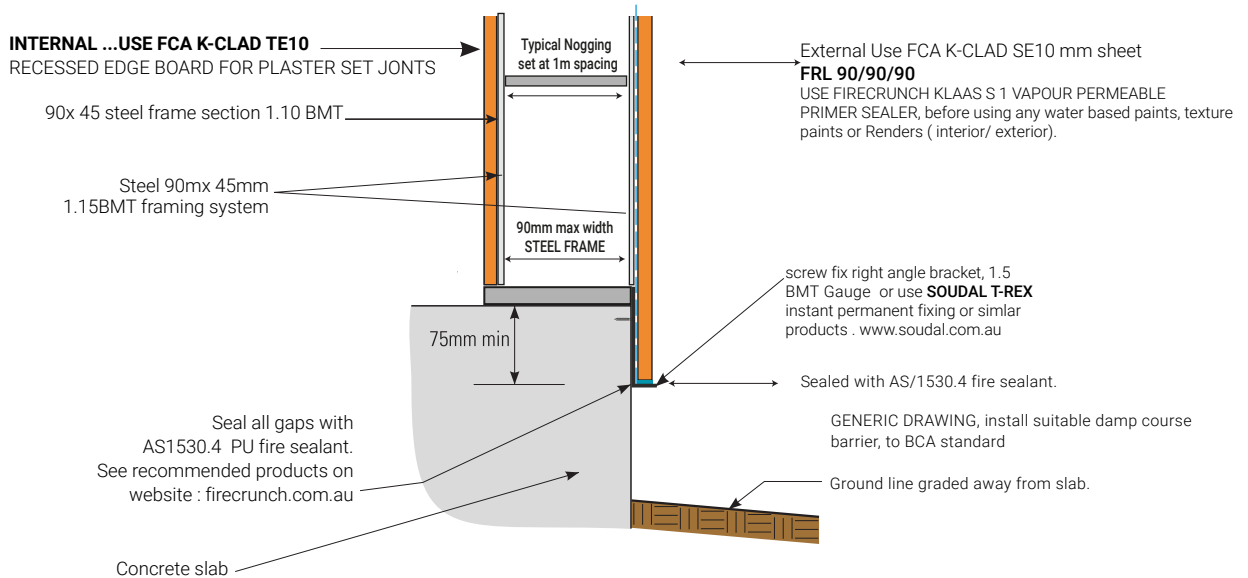
firecrunch.com.au



FireCrunch Drawing No1: SHED FCA K-CLAD 10mm
SHED FRL 60/60/60 and 90/90/90



FireCrunch Drawing No2 K-CLAD TE10 : Side Elevation



CSIRO/ NATA FIRE TESTED (NCC)

FireCrunch is applicable in BAL 29, 40 or FZ (Flame Zone) regulation areas and meets the AS/3959 requirements, when used to protect exposed timber framing ,where used , eaves joists etc., Non Combustible under AS/ 1530.1 and smoke release under AS/3837. Load Bearing ,FRL 60/60/60 (10mm on Dbl stud Timber frame) Load Bearing FRL 90/90/90 (10mm on single steel frame) FRL-/120/120 ,2 x 10mm each side on Steel frame walls (NCC). Fire Wall Penetrations to FRL 90/00/90 SNAP fire collars. (CSIRO) Assessment certificate, (ask us)
CSIRO Fire Test AS / 1530.4-2016 and AS/1530.1 NATA LABS CSIRO NON COMBUSTIBLE MATERIALS C1.10 AND C1.12
COMPLIES WITH THE BUILDING CODE OF AUSTRALIA
FireCrunch is Fire Tested under CSIRO Certificates No's: 2674 / 2707 / FCO-3165 ISO /IEC 17025