



TECHNICAL SPECIFICATION DRAWINGS

SPECIFICATIONS:
DOUBLE STUD WALL AT SUB FLOOR LEVEL

FRL 90/90/90

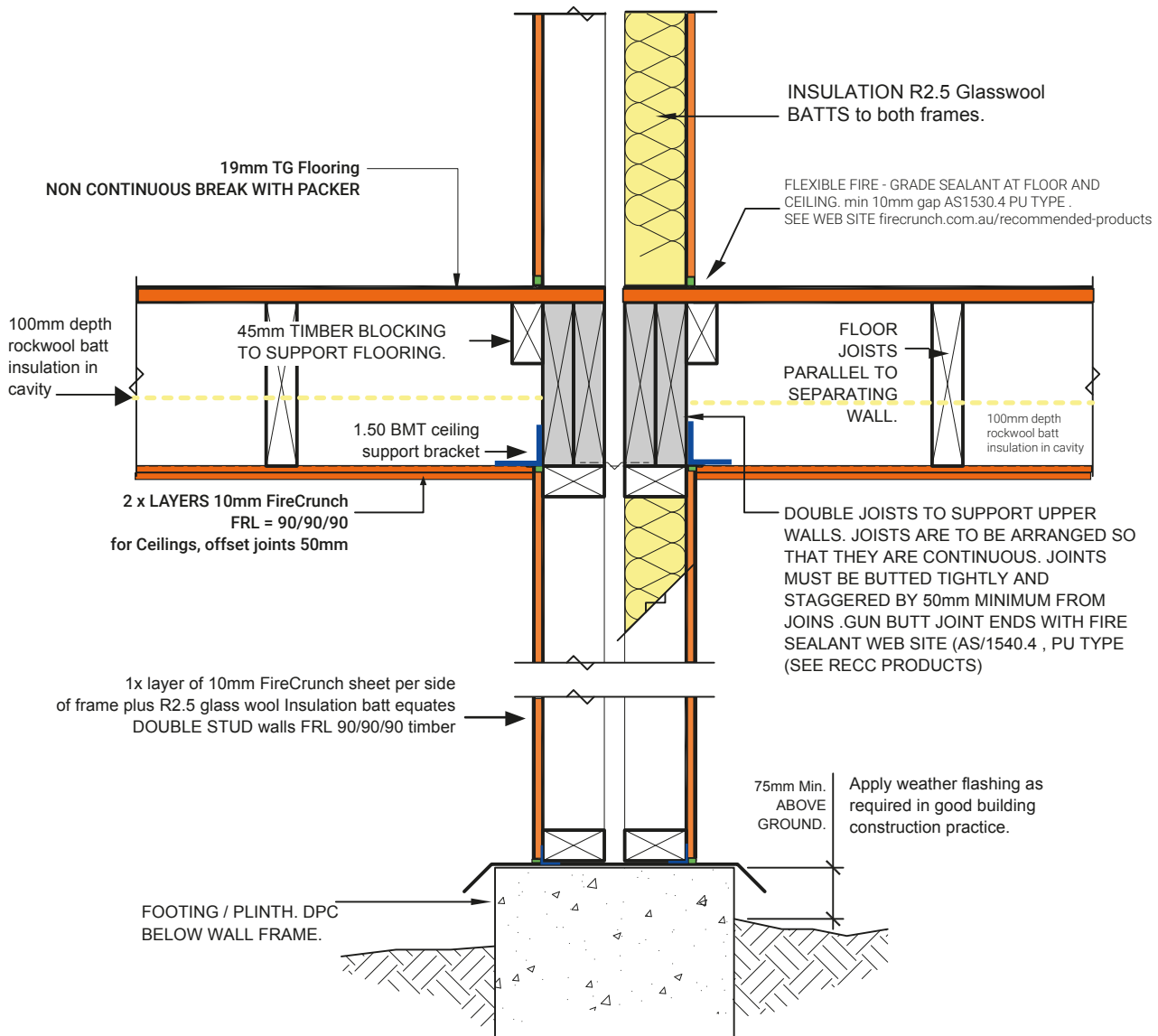
NATA Labs Australia Fire Tested Systems **AS1530.4** and more

NOTE: FCA ref, is FireCrunch Australia



firecrunch.com.au





Char Rate Radiata Pine MGP10, 0.67mm per minute construction practice. 1000° deg with no protection direct fire exposure char Rate movement 60 minutes is 60 x 0.67mm =40mm at 90 minutes is 60mm (wall suport depth 90mm) but with Extra 2/10mm FireCrunch under side and 20mm top side of Flooring the frl is easily supported to 60 and 90 Minutes in timber framing as per NCC test spec

Summary: All FireCrunch (FCA) drawings are generic and not to scale , builders should read the manuals for each type of construction and use the recommended products listed on the home page browser web site. Specific plaster set products listed are related to warranty in plaster setting joints, fixings can be any brand ,to the specs listed in the general technical manual, as are insulation batts, fire sealants. These are all available from trades hardware suppliers in Australia . The vapour permeable primer sealer KLAAS Coatings S1 is a warranty brand ,type product and must be used on all FireCrunch boards first, once sealed any brand of water based finishing top paints may be used for interior or exterior Finishing. Do not use other than specified undercoat primers on any FireCrunch (FCA) MgSO4 boards, as it will void the warranty.vv